

Figure 2. Color index used to quantify ventral coloration in *Carcinus maenas*. Color chips are sections of paint swatches. Color of third maxillipeds was matched to a color chip to determine the appropriate color index (CI) value.

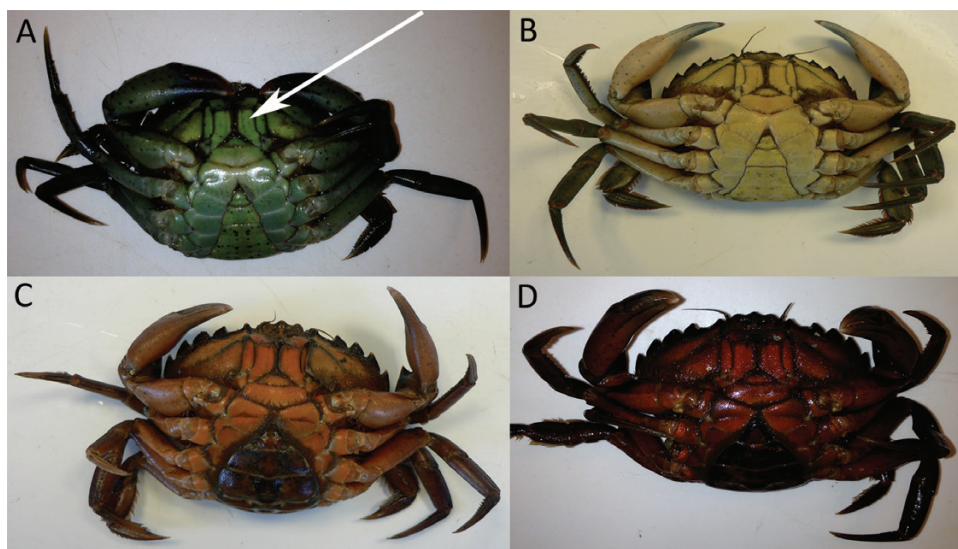


Figure 3. Examples of *Carcinus maenas* ventral coloration. Arrow points to third maxillipeds that were used to determine color index (CI) values. A, green male (CI = 1); B, yellow male (CI = 6); C, orange female (CI = 9); D, red female (CI = 12).